

Exit Drills In the Home - EDITH

Developing the Plan

Your plan should indicate the location of:

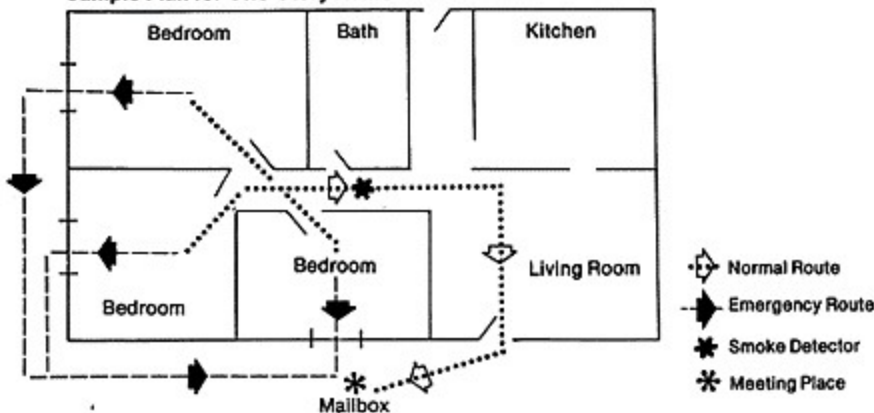
- Smoke Detectors
- Fire Extinguishers
- Two escape routes; one for normal use
And one emergency route.
- A central meeting place outside

If a window is designated as an emergency route, make sure the person who uses it is able to:

- Reach and unlock the window
- Remove the screen and/or storm window.
- Reach the ground safely
- Use a fire ladder if needed.

- Instruct everyone to gather at a central gathering place outside the home.
- Designate someone to call the Public Safety Department. (X911)
- Practice your plan.

Sample Plan for One-Story Home



Putting the Plan into Action

- Sleeping with doors closed can add valuable minutes of protection against flame, smoke, and toxic gases.
- If the smoke detector sounds or you smell smoke, arouse the others in the house with a signal. Whistle, horn, etc.
- Keep Calm.
- If possible, call Public Safety at X911
- Roll out of bed and crawl to the door.
- Feel the door from bottom to top. If it is hot near the top, do not open it. Proceed to your emergency exit.
- If there is only light smoke, crawl to the normal exit. If the smoke is thick use your emergency exit.
- Do not re-enter the building for any reason.